

Speaker Security Repeater

Revision A: VLRPT

Major Changes from Previous Revision:

- First Release of Board

Description

The VLRPT board provides a means of monitoring the continuity of a low impedance line level circuit that require audio accessories (i.e. Volume Controls, Equalizers, etc.) in series with them. The VLRPT provides an interface (JP1) for audio inputs, outputs, and 24VDC power.

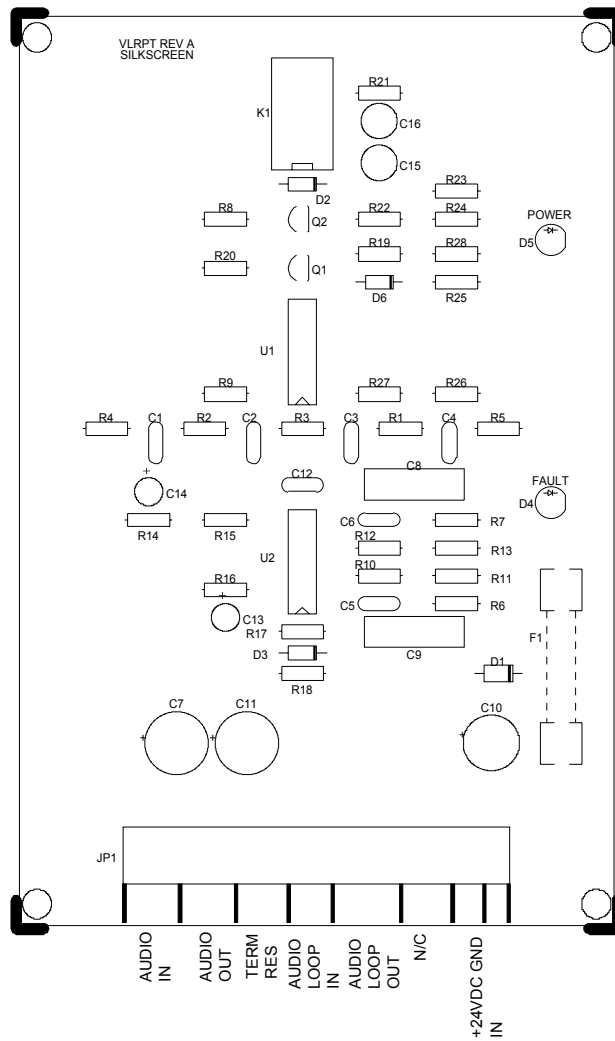
The VLRPT assembly provides a means of monitoring the integrity of a balanced, low impedance, line level audio circuit and for a low voltage/no voltage condition of a 24 volt power supply. It is used in conjunction with VLSSD Speaker Security board and VLGIO Graphic Input/Output board. The VLRPT detects a fault condition, relays the fault to the VLSSD, and a trigger output signals the VLGIO which sends this data to the VLCPU. This allows the class of service to be programmable to meet the needs of different situations.

Fault detection is accomplished with the use of comparator circuitry designed to detect shifts in the power supply voltage and impedance of the balance outputs of the audio accessory.

Power to the VLRPT assembly is via a two-conductor cable from a user supplied 24vdc power supply. The 24vdc power is connected to JP1.

Note: The VLRPT must be used with Valcom "VL" series speakers for proper operation.

P.C. Board Layout



Top View
VLRPT, Revision A

The VLRPT board provides the following:

Interface 24VDC power and audio input/output Connector, **JP1**
 3AG 1/2 amp Fuse, **F1**

The items in **bold** above can be identified on the PC board layout above.

Security Repeater Wiring Diagram

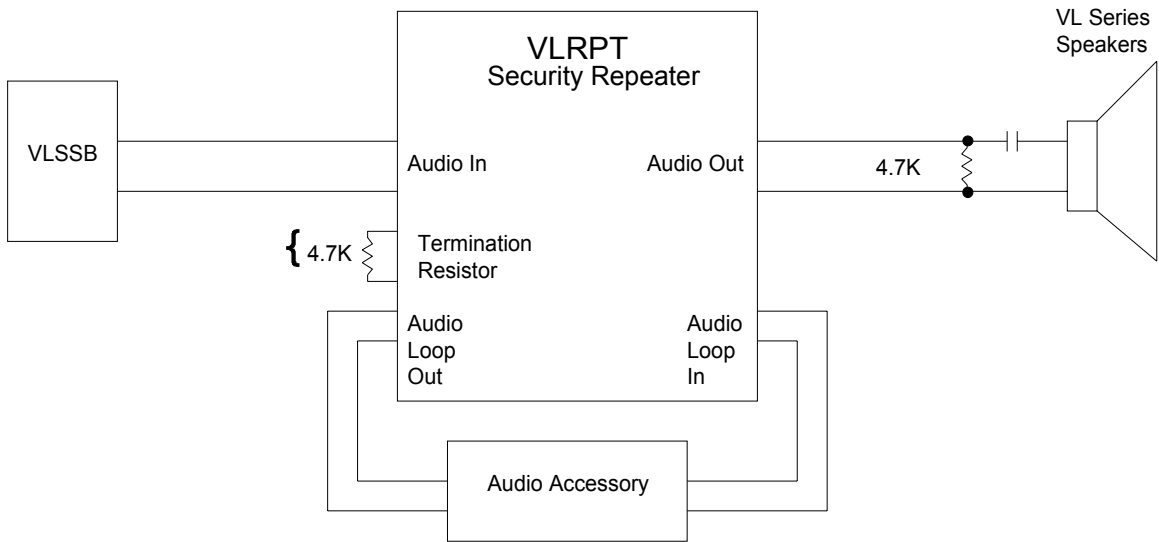


Figure 2

Wiring with all speakers behind the Audio Accessory

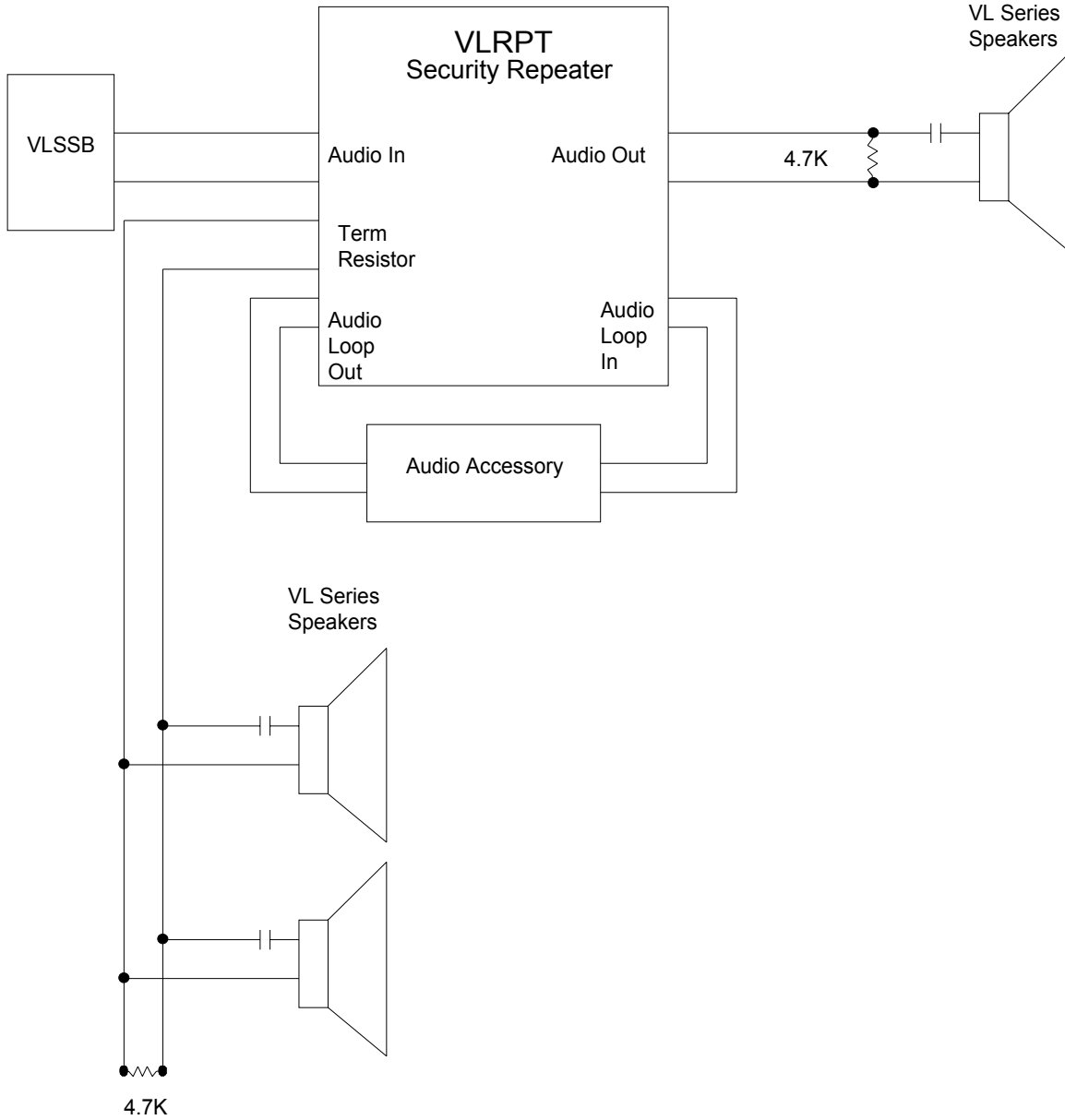


Figure 3

Wiring with one or more speakers in the zone not using the Audio Accessory

JP1

